

FILED FOR RECORD
MARTIN COUNTY, FLA.

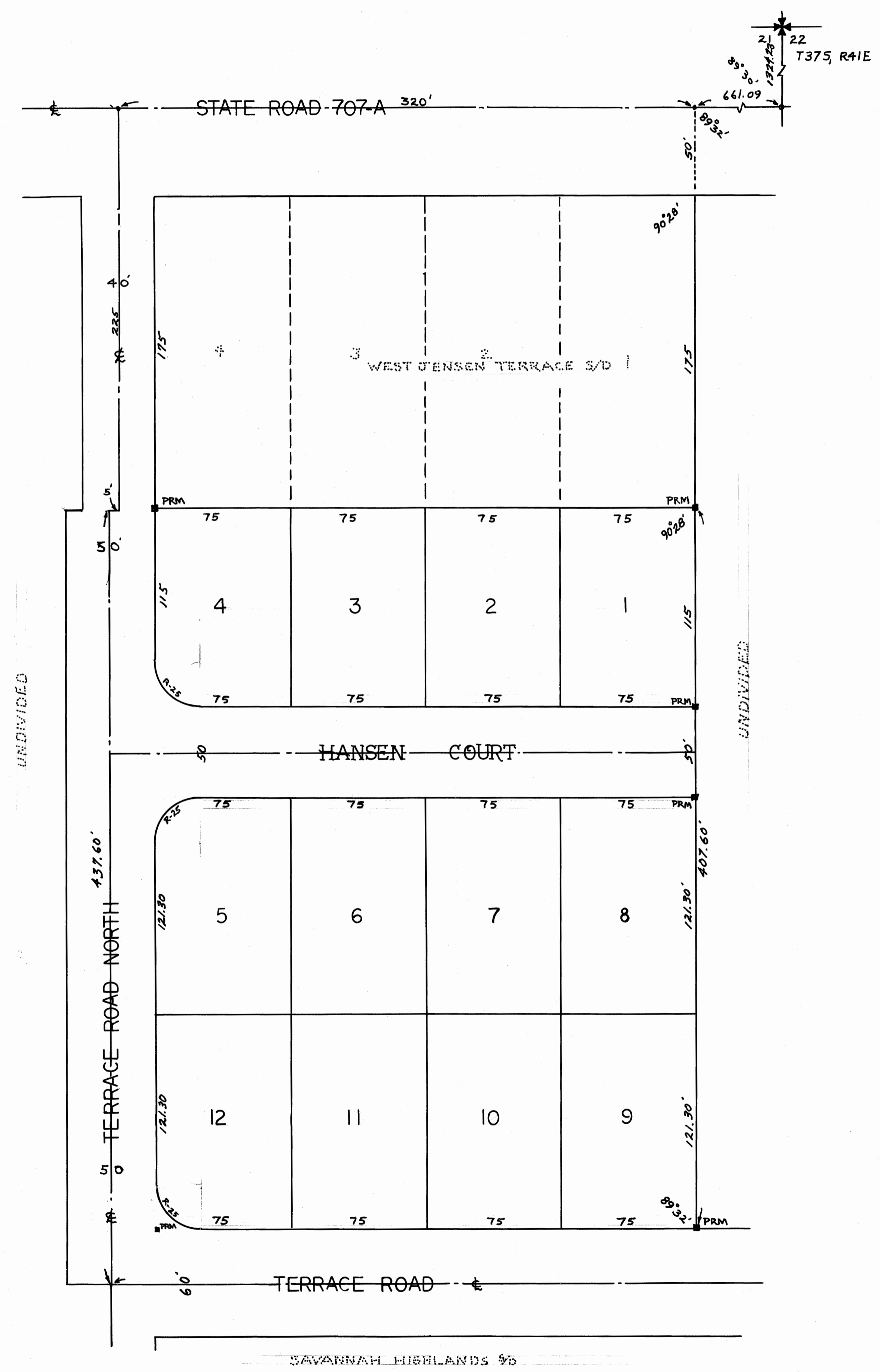
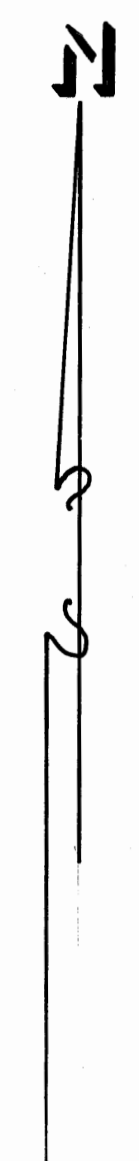
70 MAY - 1 AM 11: 15

DOROTHY PIERCE
CLERK OF CIRCUIT COURT
By *James Henry* D.C.

I HEREBY CERTIFY THAT I HAVE EXAMINED THE ATTACHED
PLAT AND FIND THAT IT COMPLIES IN FORM WITH CHAPTER
177, FLORIDA STATUTES, AND WAS FILED IN PLAT BOOK
4, PAGE 24, THIS 1 DAY OF MAY, 1970, A.D.
IN THE OFFICE OF THE CLERK OF THE CIRCUIT COURT, MARTIN
COUNTY, FLORIDA.

Dorothy Pierce
CLERK OF THE CIRCUIT COURT

FILE NO. 14-6762



HANSEN HEIGHTS

BEING THE EAST 325' OF THE SOUTH 437.6' OF THE N.W. 1/4 OF
THE S.E. 1/4 OF THE N.E. 1/4 OF SECTION 21, T37S, R41E,
MARTIN COUNTY, FLORIDA.

APRIL 4 1970

SCALE 1" = 40'

DEDICATION
STATE OF FLORIDA
COUNTY OF MARTIN

KNOW ALL MEN BY THESE PRESENTS THAT ANTON J. MILAZZO AND RUTH M. MILAZZO, HIS WIFE,
AND LILLIAN C. HANSEN, A WIDOW, OWNERS OF THE LAND SHOWN HEREON, HAVE CAUSED SAID
LAND TO BE SURVEYED AND PLATTED AS SHOWN HEREON, AND DO HEREBY DEDICATE TO THE
PERPETUAL USE OF THE PUBLIC THE ROADS SHOWN HEREON.
IN WITNESS WHEREOF WE HAVE SET OUR HAND AND SEAL THIS 15 DAY OF April A.D. 1970

George Phillips
WITNESS
George C. Tilton
WITNESS

Anton J. Milazzo
SEAL
Ruth M. Milazzo
SEAL
Lillian Hansen
SEAL

ACKNOWLEDGEMENT
STATE OF FLORIDA
COUNTY OF MARTIN

BEFORE ME THIS DAY PERSONALLY APPEARED ANTON J. MILAZZO AND RUTH M. MILAZZO, HIS WIFE,
AND LILLIAN C. HANSEN, A WIDOW, WHO ACKNOWLEDGED TO AND BEFORE ME THAT THEY
EXECUTE THE FOREGOING DEDICATION OF PLAT FOR THE USES AND PURPOSE STATED THEREIN.
WITNESS MY HAND AND OFFICAL SEAL THIS 15 DAY OF April A.D. 1970, AT *James Royal*
MARTIN COUNTY, FLORIDA.

George Phillips
NOTARY PUBLIC
MY COMMISSION EXPIRES Nov. 19, 1973

CERTIFICATE
STATE OF FLORIDA
COUNTY OF MARTIN

I HEREBY CERTIFY THAT THE ATTACHED PLAT IS A TRUE AND CORRECT REPRESENTATION OF A
SURVEY MADE BY ME AND THAT SAID SURVEY WAS ACCURATE TO THE BEST OF MY KNOWLEDGE
AND BELIEF. AND THAT PERMANENT REFERENCE MONUMENTS WERE PLACED AS PRESCRIBED BY LAW.

Randell E. Fisher
REGISTERED LAND SURVEYOR CERT. NO. 1944

SUBSCRIBED AND SWORN TO BEFORE ME THIS 16 DAY OF April A.D. 1970, AT STUART,
MARTIN COUNTY, FLORIDA.

Lynnda K. Thompson
NOTARY PUBLIC
MY COMMISSION EXPIRES Feb 19, 1974

APPROVAL
STATE OF FLORIDA
COUNTY OF MARTIN

IT IS HEREBY CERTIFIED THAT THIS PLAT HAS BEEN OFFICIALLY APPROVED FOR RECORD BY THE
BOARD OF COUNTY COMMISSIONERS OF MARTIN COUNTY, FLORIDA, THIS 28 DAY OF April A.D. 1970

APPROVED: *R. J. Alder*
COUNTY ENGINEER
Randell E. Fisher
CHAIRMAN PLANNING & ZONING COMMISSION
George Phillips
CHAIRMAN BOARD OF COUNTY COMMISSIONERS

RADELLE E. FISHER
SURVEYOR
STUART FLORIDA